



CAN-BRAC UNIVERSAL SIGNAL ASSEMBLY

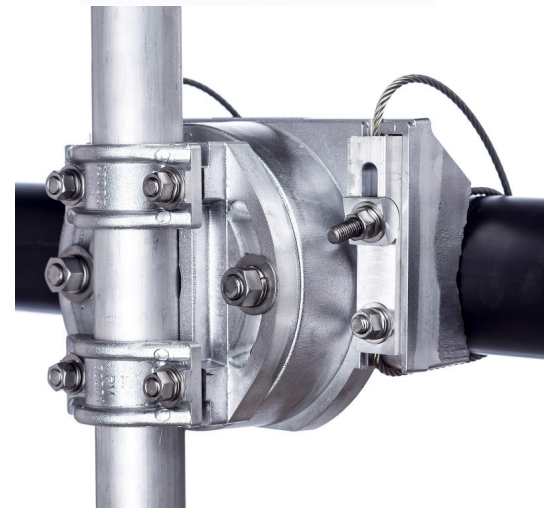
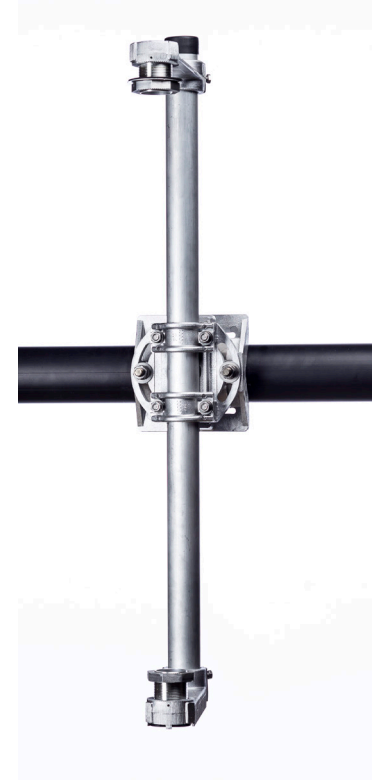
OVERVIEW

The Patented CAN-BRAC Universal is the latest in our customer proven line of CAN-BRAC signal brackets. The CAN-BRAC Universal is made of primary grade aluminum alloy designed for maximum strength, corrosion resistance and ductility. The CAN-BRAC Universal installs on a mast-arm or pole up to a 96" in diameter, by using two stainless steel cables that act in unison to provide a secondary safety.

Designed for easy installation, the signal hub assembly detaches from the CAN-BRAC assembly for direct attachment to the signal via an extruded tube, this eliminates the need for specialized tools or tricky torque specs, standard SAE wrenches are all you need. No need for a helping hand or second wrench when tightening the cable. It's so easy, all you need to do is install it and forget it.

FEATURES—CAN-BRAC UNIVERSAL

- Quick and simple installation
- Full stainless steel hardware
- Dual stainless steel cables for security
- Fits multiple signal configurations: vertical, horizontal, 1-way, 2-way and cluster
- Ships fully assembled and requires no special tools for installation



CONTACT US:

CANADA: (905) 670-3444

US/TOLL FREE: 1-844-668-6848

CAN-BRAC UNIVERSAL SIGNAL ASSEMBLY

ORDERING INFORMATION

PART NUMBER	DESCRIPTION
CUL-348VN	CAN-BRAC Universal Signal, 3 Section (48" Cable) Nipple Nut
CUL-448VN	CAN-BRAC Universal Signal, 4 Section (48" Cable) Nipple Nut
CUL-548VN	CAN-BRAC Universal Signal, 5 Section (48" Cable) Nipple Nut
CUL-396VN	CAN-BRAC Universal Signal, 3 Section (96" Cable) Nipple Nut
CUL-496VN	CAN-BRAC Universal Signal, 4 Section (96" Cable) Nipple Nut
CUL-596VN	CAN-BRAC Universal Signal, 5 Section (96" Cable) Nipple Nut
CUI-048V	Hub Only 48" Cable
CUI-096VN	Hub Only 96" Cable
CBL-300VN	CAN-BRAC Band 3 Section Vertical Nipple
CBL-400VN	CAN-BRAC Band 4 Section Vertical Nipple
CBL-500VN	CAN-BRAC Band 5 Section Vertical Nipple
CCL-300VN	CAN-BRAC Clamp, 3 Section Vertical Nipple
CCL-400VN	CAN-BRAC Clamp, 4 Section Vertical Nipple
CCL-500VN	CAN-BRAC Clamp, 5 Section Vertical Nipple

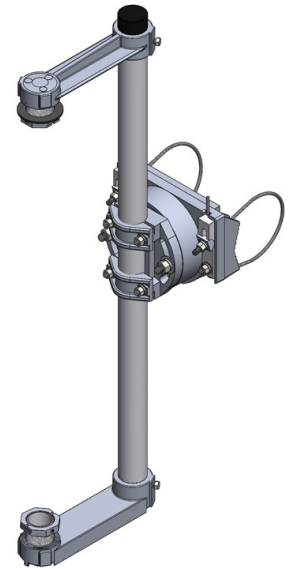
NOTE: For horizontal orientation add suffix "H" to part # in place of V and for TRI BOLT add suffix "T" in place of N when ordering additional options available including custom cable lengths. Band sold separately Contact Sales for more details

SUPPORT & WARRANTY

We believe so much in the quality of our products that we offer an industry leading support and warranty program, five years of warranty from date of initial purchase. If it breaks on installation we will replace it, no questions asked.

SPECIFICATIONS

Finish: Cast aluminum
Material: Primary grade aluminum
Machine: Computer numeric controlled machin(CNC) to within 0.001" of Specification
Colors: Available as required. Please visit our paint page for colors.



Distributed by **FORTRAN** www.fortrantraffic.com
 Central Office: 1-800-387-4555
 Western Office: 604-502-9680

CANADIAN OFFICE/WAREHOUSE
 1641 Trinity Drive
 Mississauga, ON L5T 1K4
www.traffichardware.com

CENTRAL OFFICE
 300 International Drive, Suite 100
 Buffalo, NY 14221
www.traffichardware.com